



21-
①

**FIRST AMENDMENT TO MASTER DEED
OF
FOX GLEN**

THIS FIRST AMENDMENT TO MASTER DEED OF FOX GLEN is made and executed on this 17th day of December, 1999, by FOX GLEN DEVELOPMENT, L.L.C., a Michigan limited liability company, whose address is 3921 Lohr Road, Ann Arbor, Michigan 48108 (the "Developer").

PRELIMINARY STATEMENTS

A. Fox Glen (the "Project") was established by recording the Master Deed of Fox Glen dated September 22, 1999, and recorded October 14, 1999, in Liber 3906, Page 568, Washtenaw County, Michigan records (the "Master Deed") establishing the real property described in Article II of the Master Deed, together with the improvements located and to be located thereon and the appurtenances thereto, as a condominium project under the provisions of Act 59 of the Michigan Public Acts of 1978, as amended (the "Act"); and

B. The Developer has the unilateral right without the consent of any co-owner or other person to amend the Master Deed to make amendments that do not materially alter or change the rights of a Co-owner or mortgagee, including correction of errors.

C. The Developer desires to correct an error made in the location of Unit 1 and Unit 2 of the Project on the Condominium Subdivision Plans prepared by Atwell-Hicks, Inc.

NOW, THEREFORE, the Developer does hereby amend the Master Deed as follows:

1. **Condominium Subdivision Plan.** Sheet 1 and sheets 5 through 8 of the Condominium Subdivision Plan attached to this First Amendment are hereby substituted in the place of sheet 1 and sheets 5 through 8 of the Condominium Subdivision Plan attached to the Master Deed.

2. **Continuing Effect.** Except as amended and modified by this First Amendment to Master Deed, all terms and conditions of the Master Deed, as previously amended, shall remain in full force and effect.

21-
FAT-
80955

IN WITNESS WHEREOF, the Developer has duly executed this First Amendment to Master Deed as of the day and year first above written.

WITNESS:

FOX GLEN DEVELOPMENT, L.L.C., a Michigan limited liability company

Julie L. TerVeen
 Julie L. TerVeen
Debbie A. Westerhuis
 Debbie A. Westerhuis

By: Harold J. Kloosterman AKA H.J. KLOOSTERMAN
 Its Member

STATE OF MICHIGAN)
) ss.
 COUNTY OF KENT)

The foregoing instrument was acknowledged before me this 17th day of December, 1999, by Harold J. Kloosterman, the Member of Fox Glen Development, L.L.C., a Michigan limited liability company, on behalf of the company.

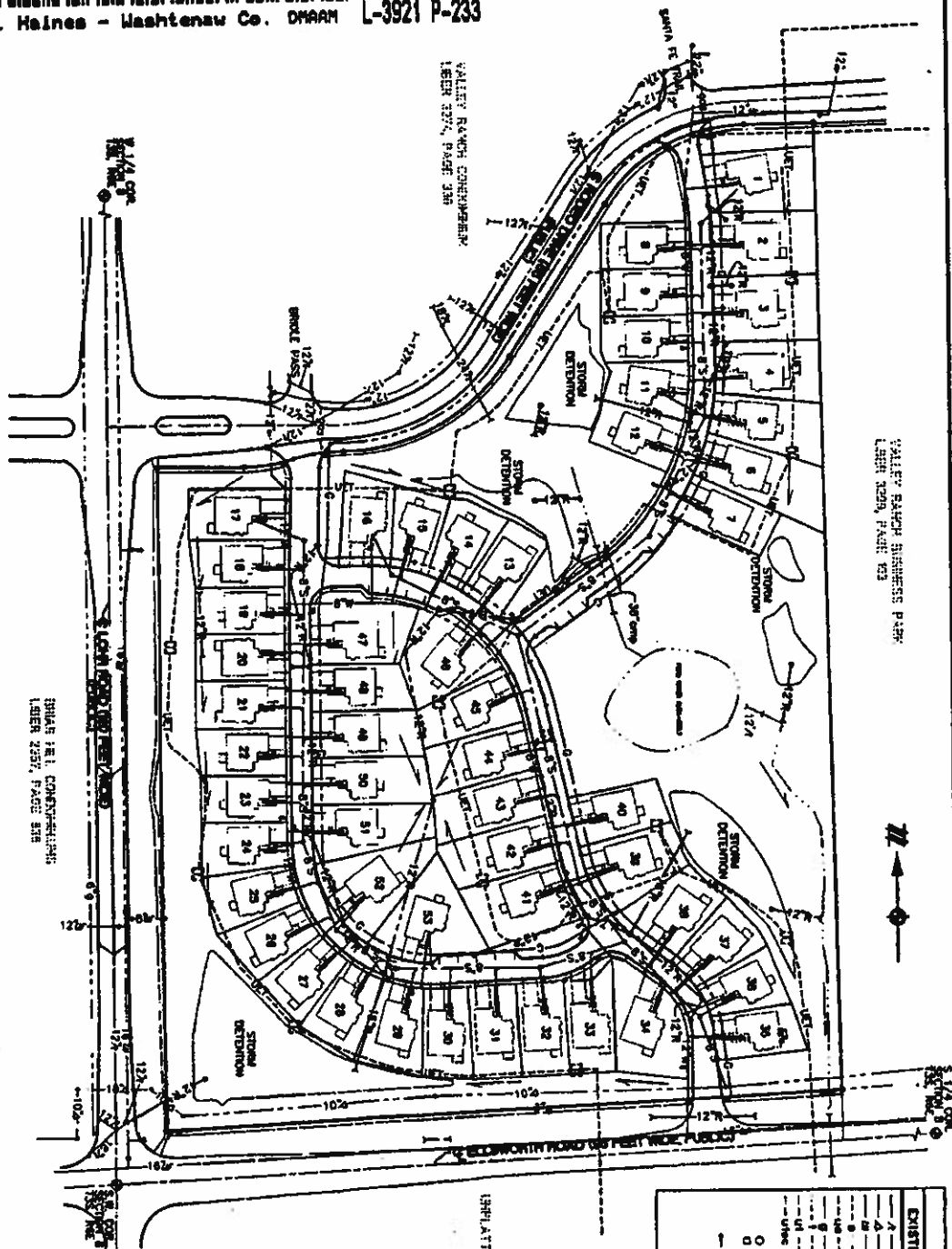
Julie Lynn TerVeen
 Julie Lynn TerVeen
 Notary Public, Kent County, MI
 My Commission Expires: 12/9/03

✓ This Instrument Drafted By:
 KEITH P. WALKER
 McSHANE & BOWIE, P.L.C.
 1100 Campau Square Plaza
 99 Monroe Ave. NW
 P.O. Box 360
 Grand Rapids, MI 49501-0360

After recording return to Draftsman.



Peggy M. Haines - Washtenaw Co. DWAAM



- NOTES:
1. ALL LOTS WILL BE SERVICED WITH SANITARY SEWER AND WATER BY PITTSFIELD TOWNSHIP. INFORMATION IS SHOWN OBTAINED FROM APPROVED CONSTRUCTION PLANS.
 2. ALL LOTS WILL BE SERVICED WITH POWER BY THE DETROIT Edison COMPANY. ALL LOTS WILL BE SERVICED WITH TELEPHONE BY THE CENTRAL MICHIGAN TELEPHONE COMPANY. TELEPHONE AND CABLEVISION LINES AS SHOWN OBTAINED FROM DETROIT Edison COMPANY PLANS.
 3. ALL LOTS WILL BE SERVICED WITH GAS BY THE MICHIGAN CONSOLIDATED GAS COMPANY. INFORMATION IS SHOWN OBTAINED FROM MICHIGAN CONSOLIDATED GAS COMPANY CONSTRUCTION PLANS.

4. STORM SEWER LOCATIONS SHOWN ARE OBTAINED FROM APPROVED CONSTRUCTION PLANS.
5. ALL SANITARY LINES ARE 6" ALL WATER LINES ARE 1-1/2" DIAMETER.
6. ALL OVERHEAD LINES ARE 1/2" OR 3/4" DIAMETER.
7. ALL OVERHEAD COMMON UTILITY LINES AND POWER LINES BE SHOWN.
8. ALL LOTS, OTHER UTILITIES AND SERVICES FIELD TO BE SHOWN.

SHAW TEL. CONSTRUCTION;
 LAGER 2257, PAGE 516

LEGEND	
EXISTING	PROPOSED
1	1
2	2
3	3
4	4
5	5
6	6
7	7
8	8
9	9
10	10
11	11
12	12
13	13
14	14
15	15
16	16
17	17
18	18
19	19
20	20
21	21
22	22
23	23
24	24
25	25
26	26
27	27
28	28
29	29
30	30
31	31
32	32
33	33
34	34
35	35
36	36
37	37
38	38
39	39
40	40
41	41
42	42
43	43
44	44
45	45
46	46
47	47
48	48
49	49
50	50
51	51
52	52
53	53
54	54
55	55

LEGEND
 DRAINAGE COURSE
 CONCRETE MONUMENT
 PK WALL
 EMBELLISH

UTILITY PLAN
 FOX GLEN

PROPOSED DATE: DECEMBER 15, 1999



ATWELL-HICKS & INC.
 240 W. WABASH
 ANN ARBOR, MICHIGAN 48106
 (313) 964-4000

FOX GLEN DEVELOPMENT LLC	SECTION 4
UTILITY PLAN	TOWN OF SHELBY, MICHIGAN
FOX GLEN	PITTSFIELD TOWNSHIP
	WASHTENAW COUNTY, MICHIGAN

ATWELL-HICKS & INC.
 Civil Engineering - Surveying
 Planning - Environmental Services
 Ann Arbor, MI 734 964 4000 Shelby, MI 810 223 8000 Washtenaw Co., MI 734 964 4000

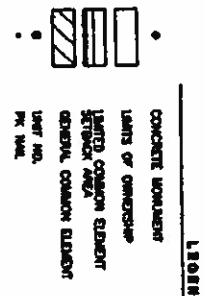
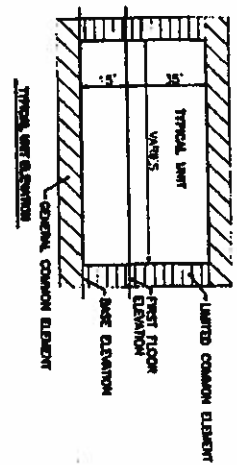
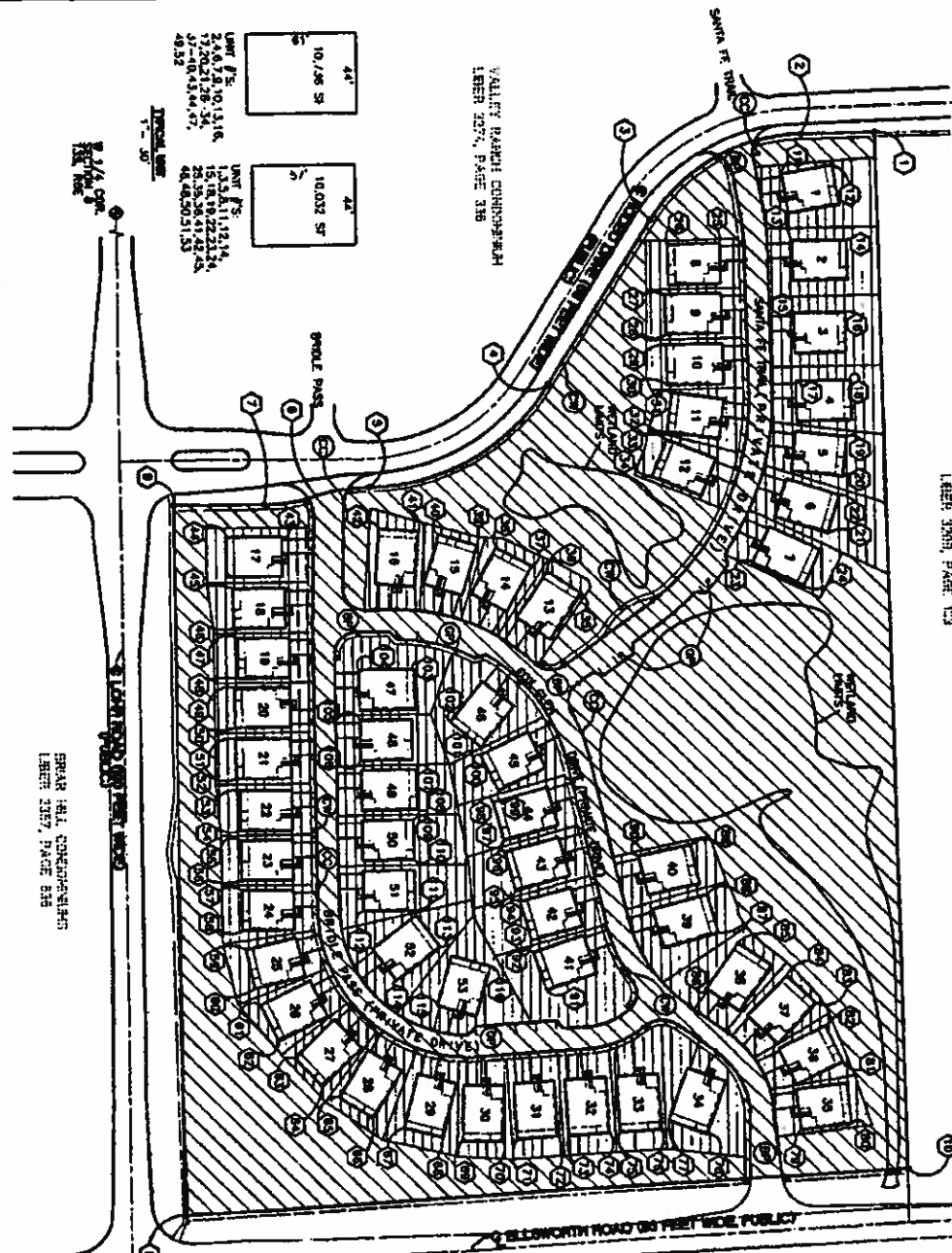
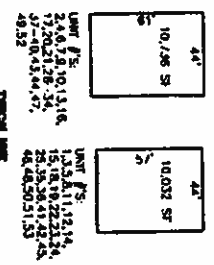


VALLEY PARK: BUSINESS PLAN
 SHEET 2097, PART C3



5 1/4" COP
 1" = 20'

VALLEY PARK: CONDO-SUBDIVISION
 SHEET 2097, PAGE 316



LEGEND

SPRINKLER HEADS
 SHEET 2097, PAGE 316

SCHEDULE
 FIRST FLOOR ELEVATIONS

UNIT NO.	FIRST FLOOR ELEVATION	UNIT NO.	FIRST FLOOR ELEVATION	UNIT NO.	FIRST FLOOR ELEVATION	UNIT NO.	FIRST FLOOR ELEVATION
1	682.35	16	672.23	31	682.35	46	672.23
2	682.35	17	672.23	32	682.35	47	672.23
3	682.35	18	672.23	33	682.35	48	672.23
4	682.35	19	672.23	34	682.35	49	672.23
5	682.35	20	672.23	35	682.35	50	672.23
6	682.35	21	672.23	36	682.35	51	672.23
7	682.35	22	672.23	37	682.35	52	672.23
8	682.35	23	672.23	38	682.35	53	672.23
9	682.35	24	672.23				
10	682.35	25	672.23				
11	682.35	26	672.23				
12	682.35	27	672.23				
13	682.35	28	672.23				
14	682.35	29	672.23				
15	682.35	30	672.23				
16	682.35	31	672.23				
17	682.35	32	672.23				
18	682.35	33	672.23				
19	682.35	34	672.23				
20	682.35	35	672.23				

NOTES:
 1. ALL GENERAL COMMON ELEMENT UTILITIES AND DRIVES MUST BE PLACED IN UNITS, OTHER UTILITIES AND DRIVES MUST BE IN THE BUILDING.
 2. THE FOOTPRINT OF ANTICIPATED BUILDINGS WITHIN UNITS AND ASSOCIATED ANTICIPATED DRIVEWAYS AND SERVICES ARE DERIVED SOLELY FROM INFORMATION PROVIDED AND ARE NOT TO BE CONSIDERED AS REPRESENTING THE EXACT POSITION AND SHALL NOT BE DEPENDENT TO LOCATE ANY UNIT FROM THE TYPICAL UNIT CONSISTING OF AN UNAPPROVED THREE DIMENSIONAL SPACE AS DEPICTED ON THIS SHEET.

PROPOSED DATE: DECEMBER 15, 1999
 JOHN L. WATSON
 CIVIL ENGINEER, ENGINEER NO. 42897
 ATWELL-HICKS, INC.
 340 WEST 10TH
 ANN ARBOR, MICHIGAN 48106
 (734) 994-4000

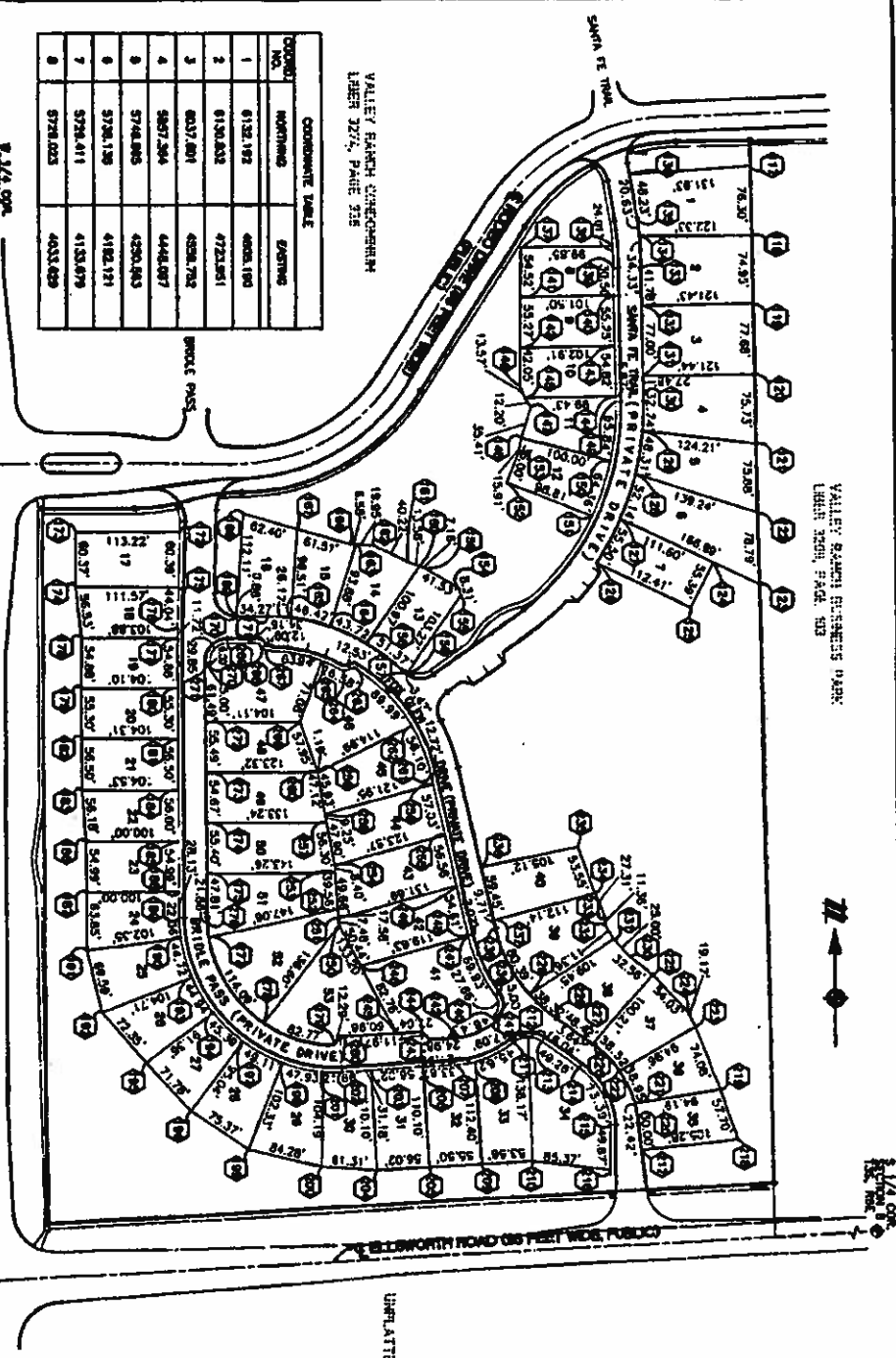


SITE PLAN
 FOX GLEN

6

FOX GLEN DEVELOPMENT, L.L.C. SECTION 6
 SOUTH SIDE OF EAST PLYMOUTH TOWNSHIP
 WASHINGTON COUNTY, MICHIGAN

ATWELL-HICKS, INC.
 Civil Engineering • Surveying
 Planning • Environmental Sciences
 Ann Arbor, MI Saginaw, MI Washington Twp., MI
 734 994 4000 810 225 9000 410 786 9800



COORDINATE TABLE

COORD. NO.	NORTHING	EASTING
9	4968.318	4638.606
10	4968.489	4624.179
11	6027.148	4701.815
12	6004.246	4782.403
13	6013.332	4711.228
14	6013.731	4772.287
15	5832.264	4713.063
16	5832.818	4770.207
17	5808.785	4744.448

COORDINATE TABLE

COORD. NO.	NORTHING	EASTING
1	6132.192	4608.190
2	6130.832	4723.951
3	6037.801	4628.792
4	5897.264	4448.887
5	5784.285	4520.843
6	5728.125	4182.191
7	5728.411	4133.679
8	5728.023	4033.689

COORDINATE TABLE

COORD. NO.	NORTHING	EASTING
18	6068.446	4778.446
19	5794.877	4798.604
20	5793.298	4794.577
21	5800.833	4747.288
22	5732.408	4782.808
23	5668.810	4464.411

PREPARED DATE: OCTOBER 13, 1999
 JOHN A. HAINES
 LICENSED PROFESSIONAL ENGINEER NO. 42891
 ATWELL-HICKS, INC.
 540 AND 542 E. MAIN ST.
 WESTFIELD TOWNSHIP, INDIANAPOLIS, IN 46204
 (317) 964-4300



COORDINATE TABLE

COORD. NO.	NORTHING	EASTING
24	5632.237	4719.459
25	6010.875	4834.632
26	6009.727	4977.240
27	5664.668	4574.555
28	5910.674	4573.287
29	5898.178	4575.478
30	5665.182	4978.210
31	5647.172	4580.856
32	5803.354	4574.684
33	5782.134	4574.530
34	5784.234	4682.603
35	5628.181	4480.722
36	5650.929	4444.246
37	5657.129	4427.282
38	5878.289	4398.635
39	5880.577	4388.488
40	5893.882	4328.688
41	5897.183	4304.545
42	5700.541	4280.281
43	5883.244	4182.835
44	5636.311	4081.265
45	5636.311	4088.469
46	5942.211	4078.488
47	5881.249	4182.273
48	5537.248	4182.244
49	5538.434	4088.202
50	5442.635	4088.675
51	5470.635	4084.718
52	5478.435	4082.890
53	5413.651	4103.023
54	5399.651	4103.184
55	5396.651	4103.237
56	5314.642	4103.497
57	5303.643	4103.490
58	5256.664	4103.621
59	5238.266	4108.257
60	5182.680	4118.289
61	5178.822	4172.334
62	5137.227	4141.729

SITE PLAN DETAILS
FOX GLEN

7

	FOX GLEN DEVELOPMENT LLC SITE PLAN DETAILS FOX GLEN	SHEET 3 TOWN & SOUTH RANGE 6 EAST WESTFIELD TOWNSHIP WASHINGTON COUNTY, INDIANA	ATWELL-HICKS, INC. Civil Engineering • Surveying Planning • Environmental Services 400 John St. Indian, IN Washington, IN, USA 734 964 4300 810 225 6000 810 798 9800
	PROJECT NO. 99-087 DATE: 10/13/99 DRAWN BY: JAH CHECKED BY: JAH		
	SCALE: AS SHOWN DATE: 10/13/99		



COORD. NO.	NORTHING	EASTING
60	5118.499	4138.323
61	5098.338	4109.268
62	5074.423	4208.188
63	5001.120	4245.468
64	5040.250	4279.232
65	5029.346	4322.281
66	5023.591	4344.029
67	5024.703	4388.020
68	5029.454	4403.895
69	5029.879	4447.913
70	5029.828	4469.094
71	5032.143	4603.022
72	5032.201	4514.204
73	5035.317	4608.432
74	5044.788	4685.793
75	5029.879	4697.189
76	5024.543	4707.811
77	5107.478	4794.133
78	5147.827	4728.882
79	5203.037	4694.251
80	5238.038	4643.481
81	5192.300	4728.082
82	5281.427	4610.312
83	5348.044	4593.372
84	5324.893	4537.135
85	5284.698	4621.989
86	5348.044	4593.372
87	5324.893	4537.135
88	5348.044	4593.372
89	5324.893	4537.135
90	5348.044	4593.372
91	5324.893	4537.135
92	5348.044	4593.372
93	5324.893	4537.135
94	5348.044	4593.372
95	5324.893	4537.135
96	5348.044	4593.372
97	5324.893	4537.135
98	5348.044	4593.372
99	5324.893	4537.135
100	5348.044	4593.372
101	5324.893	4537.135
102	5348.044	4593.372
103	5324.893	4537.135
104	5348.044	4593.372

COORD. NO.	NORTHING	EASTING
105	5489.220	4221.271
106	5448.220	4238.802
107	5454.798	4287.948
108	5306.770	4288.410
109	5279.481	4294.137
110	5238.461	4284.228
111	5278.682	4284.444
112	5278.461	4237.243
113	5238.461	4237.243
114	5278.461	4237.243
115	5278.461	4237.243
116	5278.461	4237.243
117	5278.461	4237.243
118	5278.461	4237.243
119	5278.461	4237.243
120	5278.461	4237.243
121	5278.461	4237.243
122	5278.461	4237.243
123	5278.461	4237.243
124	5278.461	4237.243
125	5278.461	4237.243
126	5278.461	4237.243
127	5278.461	4237.243
128	5278.461	4237.243
129	5278.461	4237.243
130	5278.461	4237.243
131	5278.461	4237.243
132	5278.461	4237.243
133	5278.461	4237.243
134	5278.461	4237.243
135	5278.461	4237.243
136	5278.461	4237.243
137	5278.461	4237.243
138	5278.461	4237.243
139	5278.461	4237.243
140	5278.461	4237.243
141	5278.461	4237.243
142	5278.461	4237.243
143	5278.461	4237.243
144	5278.461	4237.243
145	5278.461	4237.243
146	5278.461	4237.243

COORD. NO.	NORTHING	EASTING
147	5428.584	4386.877
148	5482.891	4626.341
149	5444.814	4684.201
150	5392.251	4681.848
151	5319.300	4621.117
152	5264.433	4628.488
153	5298.033	4622.401
154	5468.575	4688.574
155	5432.482	4688.574
156	5471.288	4622.274
157	5446.383	4421.739
158	5488.508	4288.413
159	5481.743	4422.533
160	5484.844	4444.294
161	5488.288	4423.848
162	5487.010	4287.828
163	5488.194	4277.818
164	5488.802	4288.802
165	5488.808	4288.807
166	5488.808	4288.807
167	5488.808	4288.807
168	5488.808	4288.807
169	5488.808	4288.807
170	5488.808	4288.807
171	5488.808	4288.807
172	5488.808	4288.807
173	5488.808	4288.807
174	5488.808	4288.807
175	5488.808	4288.807
176	5488.808	4288.807
177	5488.808	4288.807
178	5488.808	4288.807
179	5488.808	4288.807
180	5488.808	4288.807
181	5488.808	4288.807
182	5488.808	4288.807
183	5488.808	4288.807
184	5488.808	4288.807
185	5488.808	4288.807
186	5488.808	4288.807
187	5488.808	4288.807
188	5488.808	4288.807
189	5488.808	4288.807
190	5488.808	4288.807
191	5488.808	4288.807
192	5488.808	4288.807
193	5488.808	4288.807
194	5488.808	4288.807
195	5488.808	4288.807
196	5488.808	4288.807
197	5488.808	4288.807
198	5488.808	4288.807
199	5488.808	4288.807
200	5488.808	4288.807

COORD. NO.	NORTHING	EASTING
201	5488.808	4288.807
202	5488.808	4288.807
203	5488.808	4288.807
204	5488.808	4288.807
205	5488.808	4288.807
206	5488.808	4288.807
207	5488.808	4288.807
208	5488.808	4288.807
209	5488.808	4288.807
210	5488.808	4288.807
211	5488.808	4288.807
212	5488.808	4288.807
213	5488.808	4288.807
214	5488.808	4288.807
215	5488.808	4288.807
216	5488.808	4288.807
217	5488.808	4288.807
218	5488.808	4288.807
219	5488.808	4288.807
220	5488.808	4288.807
221	5488.808	4288.807
222	5488.808	4288.807
223	5488.808	4288.807
224	5488.808	4288.807
225	5488.808	4288.807
226	5488.808	4288.807
227	5488.808	4288.807
228	5488.808	4288.807
229	5488.808	4288.807
230	5488.808	4288.807

COORD. NO.	NORTHING	EASTING
231	5257.187	4632.724
232	5271.028	4644.828
233	5282.322	4643.213
234	5287.148	4631.837
235	5287.946	4613.825
236	5281.201	4611.201
237	5271.582	4444.519
238	5287.868	4523.807
239	5287.868	4523.807
240	5287.868	4523.807
241	5287.868	4523.807
242	5287.868	4523.807
243	5287.868	4523.807
244	5287.868	4523.807
245	5287.868	4523.807
246	5287.868	4523.807
247	5287.868	4523.807
248	5287.868	4523.807
249	5287.868	4523.807
250	5287.868	4523.807
251	5287.868	4523.807
252	5287.868	4523.807
253	5287.868	4523.807
254	5287.868	4523.807
255	5287.868	4523.807
256	5287.868	4523.807
257	5287.868	4523.807
258	5287.868	4523.807
259	5287.868	4523.807
260	5287.868	4523.807

COORD. NO.	NORTHING	EASTING
261	5488.808	4288.807
262	5488.808	4288.807
263	5488.808	4288.807
264	5488.808	4288.807
265	5488.808	4288.807
266	5488.808	4288.807
267	5488.808	4288.807
268	5488.808	4288.807
269	5488.808	4288.807
270	5488.808	4288.807
271	5488.808	4288.807
272	5488.808	4288.807
273	5488.808	4288.807
274	5488.808	4288.807
275	5488.808	4288.807
276	5488.808	4288.807
277	5488.808	4288.807
278	5488.808	4288.807
279	5488.808	4288.807
280	5488.808	4288.807

PROPOSED DATE: DECEMBER 15, 1999

JOHN A. WARDEN
 LICENSED PROFESSIONAL ENGINEER NO. 42681
 4000 W. BAYVIEW, WASHINGTON, MICHIGAN 48106
 (734) 994-4000

COORDINATE TABLE
 FOX GLEN

FOR OLD DEVELOPMENT, L.L.C.

ATWELL-HICKS & INC.
 Civil Engineering • Surveying
 Planning • Environmental Services
 2200 North Zeeb Road, Washington, MI 48090
 313.525.6000

WASHINGTON COUNTY, MICHIGAN

